



LAND
SIXTH FOR

PROSPECTUS



Welcome to our vibrant sixth form community where we believe in creating an environment that fosters growth and success. Our core values of innovation, inspiration, and collaboration shape the foundation of your educational journey, preparing you for exciting prospects beyond sixth form.

We take pride in our commitment to your academic excellence and this is underpinned by exceptional teaching. As a result, our students earn coveted spots in prestigious Russell Group universities and embark on degree apprenticeships with globally renowned organisations.

But we're not just about academic achievement. Our pioneering Futures programme opens doors to a world of career possibilities. Through engaging with external speakers, including influential figures like the former P&G student, we provide real-world experience and support for your future.

Whether you're navigating societal challenges or exploring new opportunities, we're here to support you every step of the way.



Making the right choice of sixth form is crucial to your future success. At Shireland Collegiate Academy Sixth Form we value the importance of your education, we are ambitious for you, and we want you to achieve. We also care about the impact you can make on society and that is why we invest in you as a whole person, not just your academic achievements.

G *Guidance -18*

Our students benefit from tailored UCAS support and continuous guidance for their post-18 career pathways. Our experienced team of tutors are here to provide bespoke assistance in pursuing your higher education, higher apprenticeships, employment or gap year aspirations.

CA

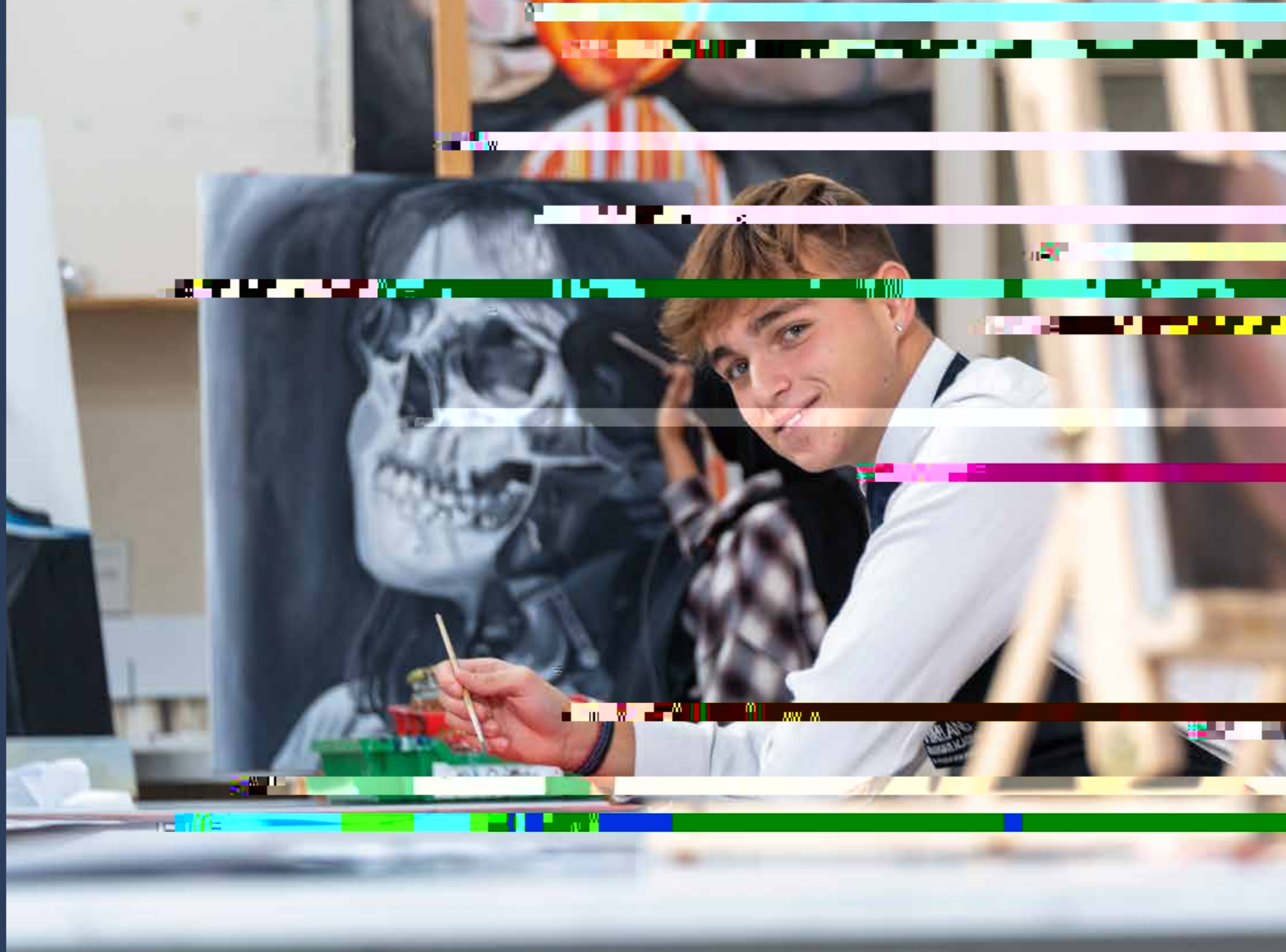
We offer expert advice on UCAS applications, personal statements and CVs, ensuring you have the support needed to reach your goals. You can also expect individual tutorials and personalised assistance throughout the application process, making your journey to higher education or other opportunities a well-guided one.

B

We are committed to ensuring that every student can access the education and training they need. The 16-19 Bursary Fund is available to provide financial support, tailored to individual needs, helping students overcome any specific barriers to their participation in post-16 education and training. This funding can assist with various costs, such as travel expenses, UCAS expenses, essential resources and any reasonable expenses required for students to fully engage in their chosen courses.

E *Extracurricular Activities (Enrichment)*

At our Sixth Form, you'll enjoy a wide array of opportunities tailored to elevating your skills, qualities and attributes, ultimately setting you apart when you apply for university or employment. Our extracurricular activities form an integral part of your experience here at Shireland Collegiate Academy Sixth Form, enriching your journey and nurturing personal growth.



Our students can study three A levels or equivalent BTECs on our Level 3 pathway. In exceptional circumstances we enable students to choose four subjects. We encourage families to explore those courses by scanning the QR code to view our subject guide.

Level 3 BTECs

BTEC Level 3 A Courses:

- A Level – Biology, Further Maths, Philosophy, Religion and Ethics, Politics, Textiles, Product Design
- BTEC – Applied Human Biology, Digital Information Technology

BTEC Level 3 B Courses:

- A Level – Maths, Art, Photography, English Language, English Literature
- BTEC – Business Studies, Health and Social Care
- RSL - Music

BTEC Level 3 C Courses:

- A Level – Psychology, Chemistry, Computer Science, Art, Dance
- BTEC – Psychology, Health and Social Care, Sport, Applied Science

BTEC Level 3 D Courses:

- A Level – Geography, History, Physics, Maths, Sociology, Travel and Tourism, German, Product Design
- RSL – Drama



We recognise the positive impact access to technology has on young people.

All sixth form students are provided with a new laptop to support them through their two years of study. Students can expect to have access to technology and software that enriches their experience:

365





All our young people progress onto a destination of their choosing be that university, apprenticeships, work or gap years.

Our students pursue a diverse range of subjects, including:

- Geography at the University of Birmingham
- Mechanical Engineering at the University of Birmingham
- Neuroscience at the University of Leeds
- Interior Design at the University of Edinburgh
- Chemistry at the University of Bristol
- Engineering at Warwick University
- Law at the University of Birmingham
- Civil Engineering at the University of Manchester

Furthermore, we equip our students with the skills and knowledge required to excel in their chosen fields post-graduation, making them well-prepared for various opportunities, including apprenticeships with reputable organisations such as:

- National Highways
- Bentley
- Capgemini
- Mott McDonald
- Mondelez

A

@
0121 558 8086

